

# **motion-activated** **SOLAR SECURITY** **VIDEO CAMERA & FLOODLIGHT**

## Addendum: Using the Camera Module with Apple MacOS

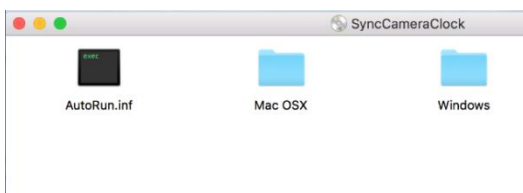
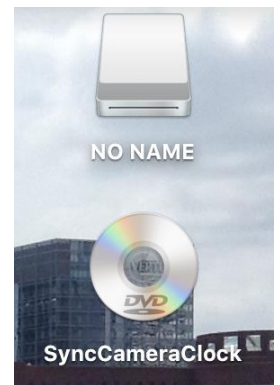
You will need to reference the main manual for other non-apple specific operations.

The instructions in this addendum depict the steps to take when using an Apple computer running MacOS. **If you are using a computer with Windows, please refer to the main instructions included with the product.**

### SETTING THE DATE AND TIME ON THE CAMERA MODULE

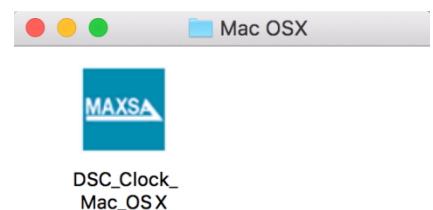
This section covers the steps you need to take to ensure your camera module has the correct date and time for your time zone; however it is not required and the video camera floodlight will still function and record videos if this section is skipped.

1. To set the time and date, the camera module must be removed from the floodlight and connected to a computer via the USB port.
2. Plug the camera module into a USB port on your computer. Two new drives should appear in the upper right-hand corner of your desktop. The Sync Program drive will appear as a DVD called "SyncCameraClock" and the storage card will appear as a removable drive called "NO NAME".



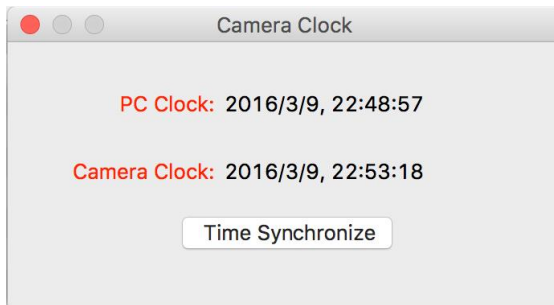
3. Open the "**Sync Camera Clock**" drive. You will see two folders: "Mac OSX" and "Windows".

4. Open the "MacOSX" folder and you will see the Sync program. The camera does not automatically sync when you plug the camera into a USB port. You must run this program to sync the camera.

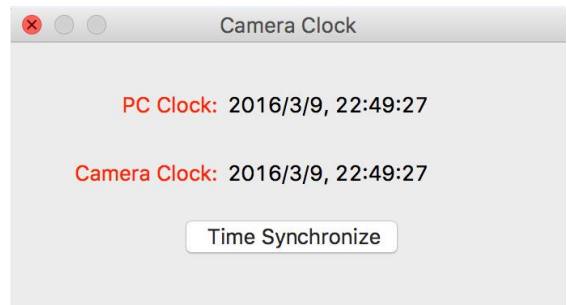


- When the program opens, you will see a display that shows the date and time on the computer listed as "PC Clock" and the date and time on the camera listed as "Camera Clock". They will most likely be different as the camera has not yet been synced. Click the "Time Synchronize" button to sync the camera clock to the computer clock.

Before:



After:



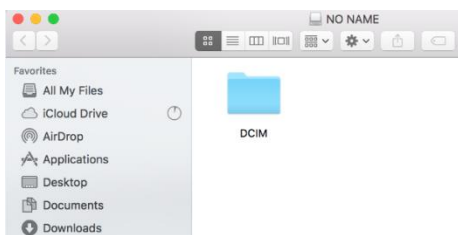
**NOTE:** You will need to sync the camera module again when seasonal time changes occur. The camera module will not automatically adjust the time. Syncing the camera module to a computer ensures you have the proper time.

**NOTE:** If the video camera floodlight is OFF or the battery has no power for more than four (4) days, the date and time on the camera module may slip and no longer be accurate once the video camera floodlight is switched back to AUTO. Repeat the "**Setting the Date and Time**" section above to sync the camera again. Be sure the battery pack in the video camera floodlight is fully charged as well.

## VIEWING THE VIDEOS

You must follow the steps in this section anytime you wish to view the videos on the micro-SD storage card located in the camera module. **If the camera is already plugged into the computer, skip to step 3.** If not, start with step 1. If the product or micro-SD card is new and no testing has been done, the card will not have any files.

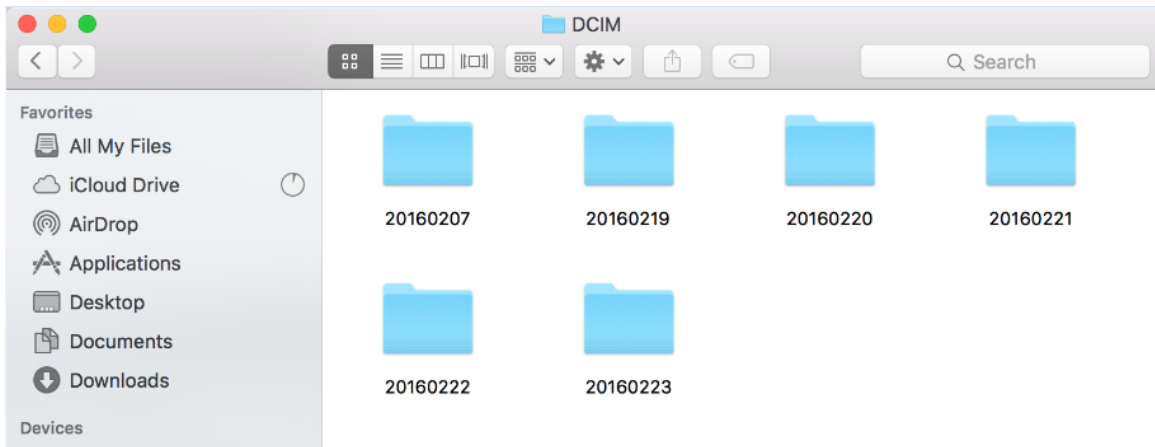
- Disconnect the camera module by following the steps in "**How to Disconnect the Camera Module**" on page 3 of the main instruction booklet included with the product.
- Plug the camera module into a USB port on your computer.
- Open the drive for the storage card, labeled "NO NAME".



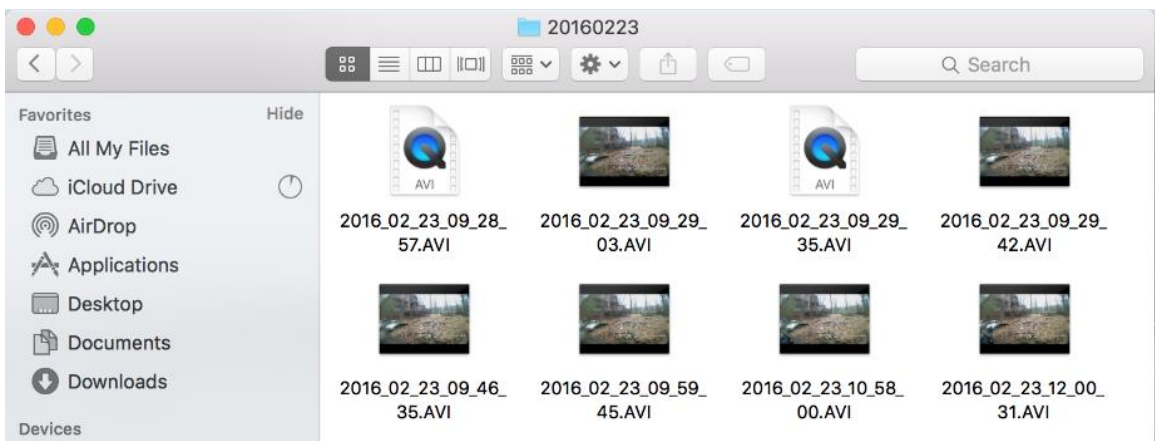
- Double-click the folder labelled "**DCIM**".

**NOTE:** If the micro-SD card is new or if you have not tested the coverage area (pg. 4 of the main instructions), the "**DCIM**" folder will not exist yet.

5. The next set of folders you see are named by the date the videos were recorded. The folders holding the videos for each day will be named with the following format: **YYYYMMDD** (Year, Month, Day)  
For example, all videos recorded on March 23rd, 2016 will be in a folder labeled 20160223. Find the day you want to view and double-click the folder.



6. Within each folder, you will see all the video files recorded that day. The video files will have the following format: **YYYY\_MM\_DD\_HH\_MM\_SS** (Year, Month, Day, Hour, Minute, Second).



The time stamp corresponds to the time the video started recording. The hours are listed in military time so will appear as 00 through 23. For example, a video recorded on February 23rd, 2016 at 3:07 and 22 seconds PM will have the filename 2016\_02\_23\_15\_07\_22.

7. Click on any of the files to view the video that was recorded at that time.

**NOTE:** There is a one (1) second delay between the time when the video camera floodlight is activated and the time when the camera actually starts recording. Because of this delay, moving objects may be well within the field of view of the camera when the video camera starts recording.

**NOTE:** After the micro-SD card is full, the camera records over the earliest recordings, so make sure you save any files you want to your hard drive.

## SAVING THE VIDEOS

---

1. Open the folder on your hard drive where you want to store the videos.
2. Go back to the folder view for the micro-SD card storage and highlight all of the files you wish to save.
3. Click and drag the group of files to the folder on your hard drive where you want to store the files.
4. Once the files have transferred, you can delete the files on the micro-SD card storage.

## QUESTIONS AND TROUBLESHOOTING

---

For any questions or troubleshooting, you can refer to the Troubleshooting section starting at the bottom of page 9 in the main product manual. You can also contact customer service by calling 703-495-0661 or emailing [info@maxsainnovations.com](mailto:info@maxsainnovations.com).

**MADE IN CHINA**

---

**MAXSA**®

**MAXSA Innovations**

8412 Cathedral Forest Drive  
Fairfax Station, VA 22039

Tel: 703-495-0661

email: [info@maxsainnovations.com](mailto:info@maxsainnovations.com)

**[www.maxsainnovations.com](http://www.maxsainnovations.com)**

Version 16-1

©2016 MAXSA Innovations, All Rights Reserved